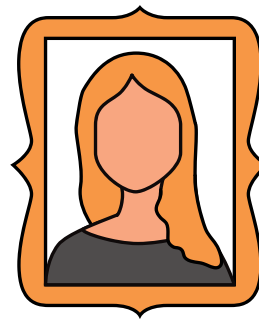
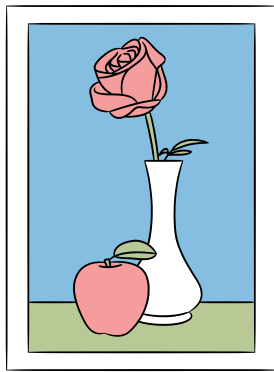


4-H KIDS ARTS

1. All submitted artwork must be the original work of the exhibitor (with the exception of frames & mats).
2. Only ONE entry per person in each category.
3. Each entry must be numbered and tagged at check-in. The name of exhibitor must be on the tag.
4. All artwork and photography must be matted prior to check-in.
5. Canvas artwork does NOT need to be matted.
6. No glass, wood, metal or plexiglass framing will be accepted. (Matted only)
7. No paint-by-numbers or similar works accepted.
8. School projects must be labeled with exhibitors name, school and grade level.



PAINTING

1. JUNIOR ACRYLIC: USING ACRYLIC PAINT TO CREATE A PAINTING
2. SENIOR ACRYLIC: SAME AS JUNIOR
3. JUNIOR WATERCOLOR: USING WATERCOLORS TO CREATE PAINTING ON WATERCOLOR PAPER
4. SENIOR WATERCOLOR: SAME AS JUNIOR
5. JUNIOR ABSTRACT: USING ACRYLIC PAINTS EXPERIMENT WITH ABSTRACT DESIGNS TO COMPLETE A PAINTING
6. SENIOR ABSTRACT: SAME AS JUNIOR
7. JUNIOR SELF-PORTRAIT: USING MEDIUM OF YOUR CHOICE, COMPLETE A SELF-PORTRAIT USING ANY DRAWING OR PAINTING TECHNIQUE.
8. SENIOR SELF-PORTRAIT: SAME AS JUNIOR
9. JUNIOR HUMAN ACTION- USING ACRYLIC OR WATERCOLOR PAINTS, CAPTURE HUMAN ACTION THROUGH THE USE OF VIVID COLORS, LINES, AND TEXTURE WHEN PAINTING.
10. SENIOR HUMAN ACTION- SAME AS JUNIOR

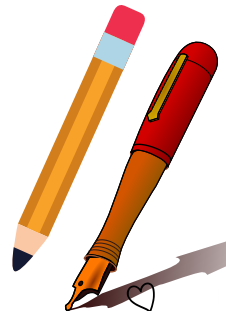
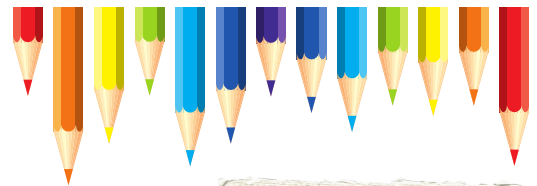
4-H KIDS GRAPHIC DESIGN

1. JUNIOR COMPUTER DRAWING
2. SENIOR COMPUTER DRAWING



4-H KIDS DRAWING

1. JUNIOR COLOR OR BLACK PENCIL
2. SENIOR COLOR OR BLACK PENCIL
3. JUNIOR PEN AND INK
4. SENIOR PEN AND INK
5. JUNIOR CALLIGRAPHY
6. SENIOR CALLIGRAPHY
7. JUNIOR CARTOONING
8. SENIOR CARTOONING



welcome

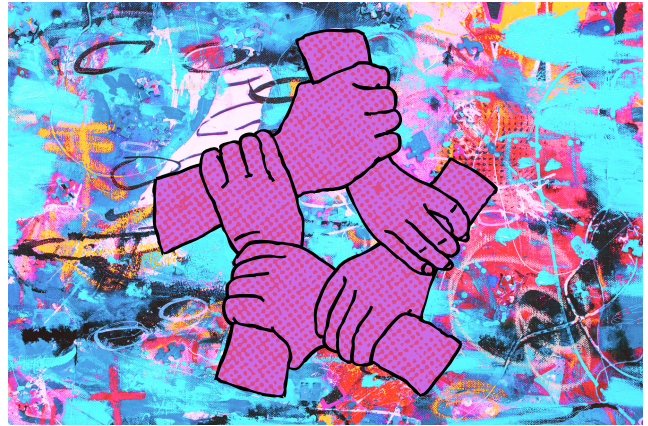
4-H KIDS SCULPTING

1. JUNIOR MASK
2. SENIOR MASK



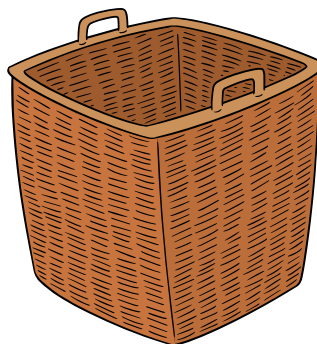
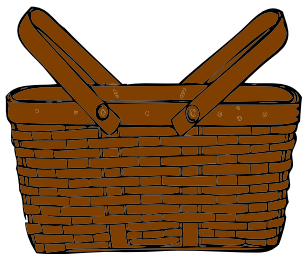
4-H KIDS TRENDS

1. JUNIOR ART TRENDS
2. SENIOR ART TRENDS



4-H KIDS HERITAGE ARTS

1. JUNIOR BASKET MAKING
2. SENIOR BASKET MAKING
3. JUNIOR JEWELRY
4. SENIOR JEWELRY
5. JUNIOR LEATHER CRAFT
6. SENIOR LEATHER CRAFT



4-H KIDS HORTICULTURE & PLANT SCIENCE

1. EXHIBITS WILL BE JUDGED ON THE QUALITY OF THE PRIMARY (HORTICULTURE) PROJECT WORK
2. ALL PLANTS EXHIBITED *MUST* HAVE BEEN GROWN BY THE 4-HER FOR AT LEAST 6 MONTHS. EXCEPTIONS WILL BE MADE WITH TERRARIUMS, DISH GARDENS, ANNUAL AND VEGETABLE BUCKET GARDENS WHICH MAY HAVE BEEN GROWN FOR A SHORTER PERIOD OF TIME.
3. ITEMS IMPROPERLY ENTERED WILL BE DISQUALIFIED
4. EXHIBITS ENTERED WITH PESTICIDE RESIDUE WILL BE DISQUALIFIED AND DISPOSED OF
5. CARE WILL BE PROVIDED FOR ALL PLANTS. HOWEVER, BECAUSE OF LOW LIGHT, AIR CONDITIONING, ETC., NO GUARANTEE CAN BE MADE THAT THE PLANTS WILL BE RETURNED IN THEIR ORIGINAL CONDITION. PLANTS ARE ENTERED AT THE RISK OF EXHIBITOR.
6. VEGETABLE ENTRIES SHOULD BE FRESH, WITH THE LABEL ON TOP OF EXHIBIT.
*DO NOT STICK TOOTHPICKS IN PRODUCE

SECURELY ATTACH THE 4-H IDENTIFICATION CARD TO THE EXHIBIT IN A LOCATION WHICH CAN BE SEEN BY THE PUBLIC ONCE THE ITEM IS DISPLAYED. ATTACH NEATLY WITH TAPE; PUNCH HOLE IN THE CORNER OF THE ID TAG AND ATTACH WITH A STRING OR RUBBER BAND; OR ATTACH TO A FLORAL PICK AND INSERT IN THE POT

YOUTH SHOULD *NOT* USE GARDEN SOIL IN CONTAINERS. USE WELL-DRAINED, DISEASE-FREE POTTING SOIL FOR ALL CONTAINERS.

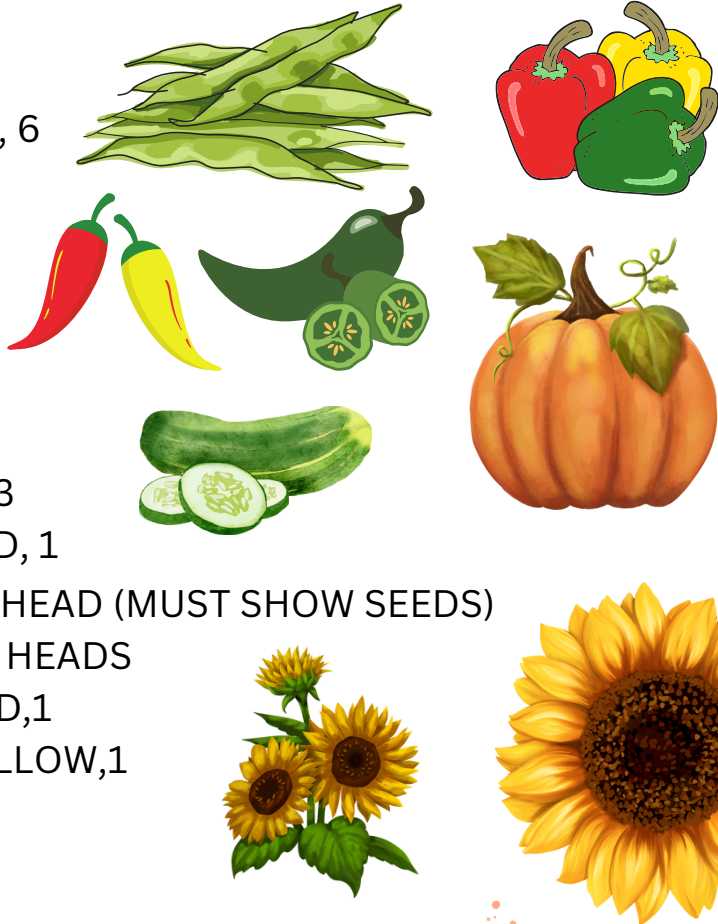


PLANT DISPLAY

1. TERRARIUMS
2. DISH GARDENS (DESERT OR TROPICAL)
3. ANNUAL CONTAINER GARDEN (NON-VEGETABLE)
4. UPCYCLE CONTAINER GARDEN (PREVIOUSLY USED CONTAINER RECYCLED)

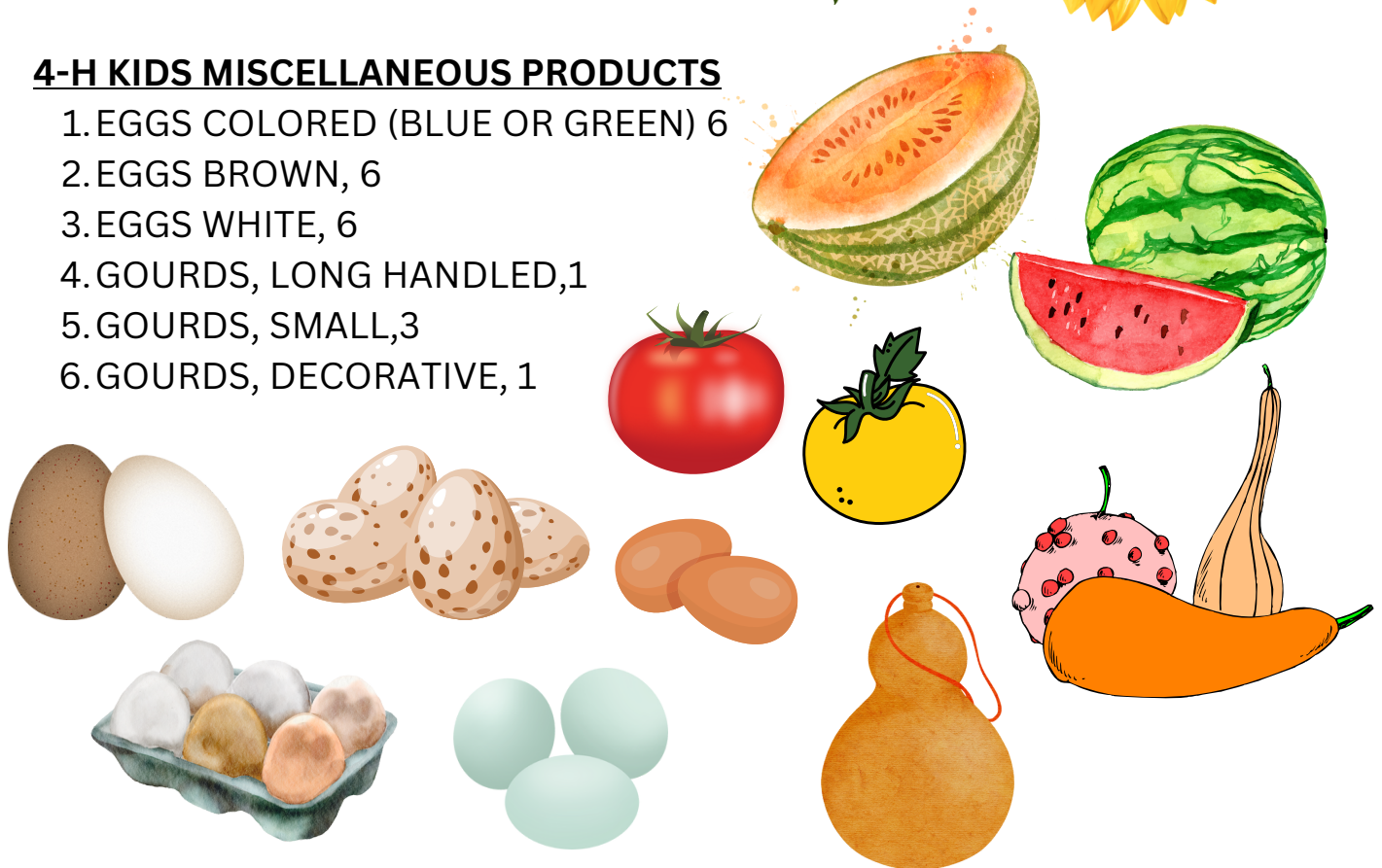
4-H KIDS GARDEN AND/OR ORCHARD DISPLAY

1. BEANS, GREEN, 6
2. BEANS, POLE, 6
3. BEANS, HALF RUNNER, 6
4. CUCUMBERS, 1
5. PEPPERS, GREEN, 3
6. PEPPERS, YELLOW, 3
7. PEPPERS, RED, 3
8. PEPPERS, CAYENNE, 3
9. PEPPERS, BANANA, 3
10. PEPPERS, JALAPENO, 3
11. PUMPKIN, LARGE FIELD, 1
12. SUNFLOWER, 1 LARGE HEAD (MUST SHOW SEEDS)
13. SUNFLOWER, 3 SMALL HEADS
14. TOMATOES, LARGE RED, 1
15. TOMATOES, LARGE YELLOW, 1
16. WATERMELON, 1
17. CANTALOUPE, 1



4-H KIDS MISCELLANEOUS PRODUCTS

1. EGGS COLORED (BLUE OR GREEN) 6
2. EGGS BROWN, 6
3. EGGS WHITE, 6
4. GOURDS, LONG HANDLED, 1
5. GOURDS, SMALL, 3
6. GOURDS, DECORATIVE, 1

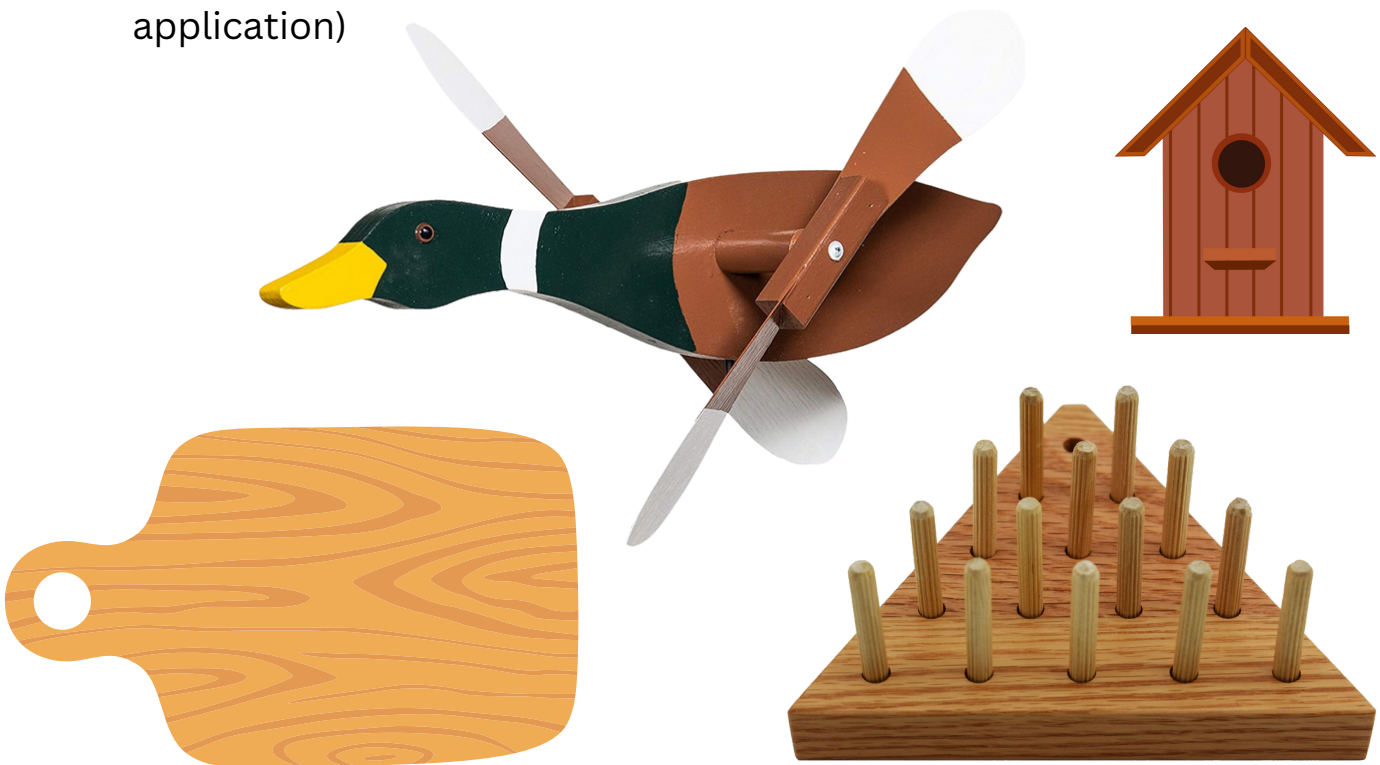


4-H KIDS WOOD SCIENCE

1. ALL ENTRIES MUST BE THE ORIGINAL WORK OF THE 4-HER
2. ONLY ONE ENTRY PER EXHIBITOR, PER CLASS
3. PROJECT MUST MEET ALL THE REQUIREMENTS FOR THE CLASS; OTHERWISE ENTRY WILL BE DISQUALIFIED
4. MCCREARY COUNTY EXTENSION STAFF ARE NOT RESPONSIBLE FOR ANY ITEMS EXHIBITED, BUT DUE CARE AND DILIGENCE WILL BE GIVEN IN THE HANDLING OF ARTICLES TO PRESENT RESONABLE PROTECTION TO EXHIBITS.

WOOD SCIENCE

1. LEVEL 1, MADE FROM A KIT (demonstrate skill with fasteners, sanding & appropriate finish)
2. LEVEL 1, NOT FROM A KIT (show knowledge of hand tools, wood selection, cutting, drilling, usage of fasteners, sanding techniques and appropriate finish)
3. LEVEL 2, MADE FROM A KIT (more elaborate items require proper cutting, drilling and demonstrate knowledge of fasteners, sanding technique and proper finish)
4. LEVEL 2, NOT FROM A KIT (more elaborate items that demonstrate mastered skills with hand tools, basic knowledge of power hand tools, fastening options, appropriate surface prep and finish application)



4-H KIDS TRENDS

1. ONE ENTRY PER CLASS PER EXHIBITOR

UPCYCLING PROJECT

Taking something that you are throwing away and make it into something that maintains or improves the quality of the materials. The designs will be judged on quality, use and creativity.

1. JUNIOR UPCYCLING PROJECT

2. SENIOR UPCYCLING PROJECT



OLD SWEATER
TO COIN PURSE



VINYL RECORD
TO EAR RINGS



4-H KIDS LEADERSHIP

1. PROJECT MUST MEET ALL THE REQUIREMENTS
2. ONE ENTRY PER CLASS PER EXHIBITOR

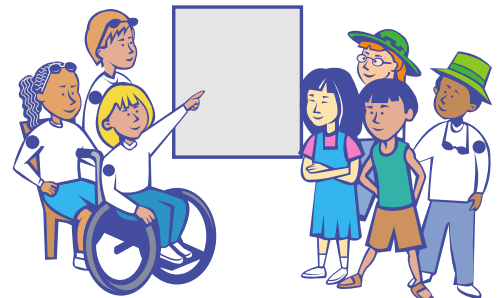
UNIQUE RULES OR INSTRUCTIONS:

- **CREATE POSTER ON 20" WIDE X 30" HIGH FOAM CORE BOARD OR STURDY CARDBOARD (TURNED IN VERTICAL DIRECTION)**
- **THE USE OF PENCIL ON THE FRONT OF POSTER IS DISCOURAGED**
- **JUDGING CRITERIA WILL BE BASED ON THEME, POSTER DESIGN (LETTERING, ATTRACTIVENESS, HOW WELL IT CONVERYS A MESSAGE) AND NARRATIVE**

1. JUNIOR DIVISION CIVIC ENGAGEMENT AND SERVICE

4-HERS WILL INTERVIEW A COMMUNITY WORKER AND CREATE A POSTER SHOWING THE RESULTS OF THE INTERVIEW. COMMUNITY WORKERS ARE DESCRIBED AS PEOPLE WHO WORK IN THE COMMUNITY FOR ITS OVERALL WELL-BEING. EXAMPLES INCLUDE PLUMBERS, CARPENTERS, TRAFFIC POLICE, DOCTORS, TEACHERS AND SAFETY PERSONNEL. COMMUNITY WORKERS WORK FOR THE PEOPLE RESIDING IN THE COMMUNITY. THEY SOLVE PROBLEMS THAT WE EXPERIENCE IN DAILY LIFE.

POSTER TO INCLUDE: FIRST NAME OF WORKER, TITLE, RESPONSIBILITIES, EDUCATION/TRAINING, CHALLENGES, AND SUCCESSES, AND WHY THEY WANT TO HELP THEIR COMMUNITY. A ONE-PAGE NARRATIVE DESCRIBING THE PROCESS SHOULD BE ATTACHED TO THE BACK OF THE POSTER.

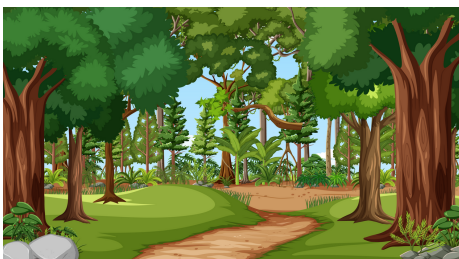
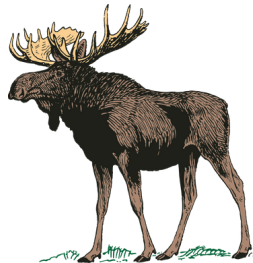
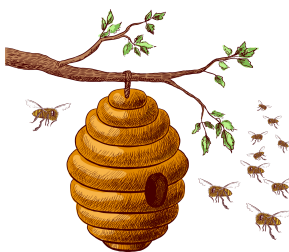


4-H KIDS PHOTOGRAPHY

1. ALL PHOTOGRAPHS MUST BE MOUNTED ON WHITE 10"X16" MAT BOARD (NO POSTER BOARD OR FOAM BOARD ACCEPTED)
2. SINGLE PHOTOS ARE LIMITED TO A MAXIMUM SIZE OF 8"X12".
3. PICTURES CANNOT BE FRAMED OR MATTED WITH COLORED MAT BOARD.
4. ALL CLASSES WITH MULTIPLE PHOTOGRAPHS MUST BE MOUNTED ON WHITE 16"X20" MAT BOARD.
5. EACH PICTURE MUST BE MOUNTED SECURELY. DO NOT USE PHOTO MOUNTING CORNERS.
6. ENTRIES MUST USE CURRENT I.D. TAGS SECURELY MOUNTED TO FRONT OF THE MAT BOARD IN THE LOWER RIGHT CORNER. * I.D. TAG SHOULD *NOT* HANG OVER EDGE OF THE BOARD.
7. PHOTOS MUST INCLUDE THE FOLLOWING DESCRIPTION (TYPED, ON WHITE PAPER OR LABEL PLACED ON THE BACK OF THE MATBOARD): CLASS, SUBJECT, LOCATION, EQUIPMENT USED (SPECIFIC CAMERA) SKILL APPLIED
8. PHOTOGRAPHY WILL BE JUDGED ON: TECHNICAL, IMPACT, COMPOSITION, CREATIVITY, PRESENTATION, AND THE ABILITY OF THE PICTURE TO TELL A STORY.

NATURAL RESOURCES

1. FOREST- SHOWING LARGE AREA DOMINATED BY TREES
2. WATER- SHOWING STILL OR MOVING NATURAL WATER ACTIVITY
3. WILDLIFE- SHOWING UNRESTRAINED AND LIVE WILDLIFE IN NATURAL HABITAT; DOMESTIC ANIMALS ARE NOT PERMITTED
4. NATURAL SCENIC- NATURAL SCENE (MANMADE OBJECT NOT AS SUBJECT)
5. NATIVE PLANTS- (5) PHOTOGRAPHS OF KENTUCKY NATIVE FLORA IN NATURAL AREA- A PLANT THAT OCCURS NATURALLY IN THE PLACE WHERE IT EVOLVED
6. INSECT- UNRESTRAINED AND IN NATURAL HABITAT



4-H KIDS AGRICULTURE

1. LIVESTOCK
2. CROPS
3. LIFE CYCLE (*1-5 PHOTOGRAPHS CLEARLY SHOWING AT LEAST ONE STAGE OF LIFE CYCLE (BIRTH, GROWTH, DEATH)*)
4. AGRICULTURE SCENIC
5. FARM EQUIPMENT



4-H KIDS LEADERSHIP

1. 4-H EVENT (1-5 PHOTOGRAPHS) THAT COVER A 4-H EVENT YOU ATTENDED

4-H KIDS FCS

1. FAMILY



4-H KIDS HEALTH

1. PHYSICAL ACTIVITY
2. COMPETITIVE SPORT



4-H KIDS SEWING

1. ONE ENTRY PER EXHIBITOR
2. ITEM MUST MEET ALL REQUIREMENTS FOR THE CLASS.
3. ITEM MUST BE HANDMADE BY EXHIBITOR



LET'S LEARN TO SEW: BEGINNER SKILLS

1. UNIT 1 NON CLOTHING OPTION: *APRON OR DRAWSTRING BACKPACK/SHOULDER BAG OR TOTE BAG WITH FABRIC HANDLES OR LAUNDRY BAG. ITEM MUST INCLUDE: STRAIGHT MACHINE STITCHING, APPROPRIATE VISIBLE SEAM FINISH AND CASING OR MACHIINE STITCHED HEM.*



4-H KIDS HOME ENVIRONMENT

1. ONE ENTRY PER EXHIBITOR
2. CLASSES WITH * REQUIRE ADDITIONAL DOCUMENTATION
3. ITEM MUST MEET ALL REQUIREMENTS FOR THE CLASS.

HOME ENVIRONMENT

1. COLOR COLLAGE: A collage of color created by member to depict colors liked by the member, made of a collection of objects arranged and adhered to a mat or foam board.
2. WASTEBASKET
3. *OLD OR DISCARDED ITEM MADE USEFUL IN A NEW WAY AS A HOME ACCESSORY* This exhibit is made up of two parts: 1) the accessory and 2) a sheet or folder of documentation. Documentation is to include a "before" photo; an explanation of how the item was made useful again in a new way; materials used, cost and time involved in project. (Examples; old silverware flattened into wind chimes; old tool box cleaned and made into TV stand.)
4. COLOR WHEEL COLLAGE: A collage made up of a collection of objects artistically arranged and adhered to a mat or foam board to incorporate the color wheel.



4-H KIDS FORESTRY

1. PROJECT MUST MEET ALL REQUIREMENTS
2. ONLY ONE ENTRY PER 4-H MEMBER
3. EXHIBITORS ARE *NOT* TO EXCEED THE NUMBER OF SPECIMENS LISTED FOR EACH CLASS.
4. MUST BE MOUNTED PROPERLY (SEE INSTRUCTIONS IN FORESTRY BOOK)

FIRST YEAR

1. LEAF COLLECTION

COLLECTION OF 10 LEAVES REPRESENTING 10 FOREST TREES FOUND IN KENTUCKY.

2. LEAF PRINT COLLECTION

COLLECT AND PRINT 10 LEAVES REPRESENTING 10 FOREST TREES FOUND IN KENTUCKY.

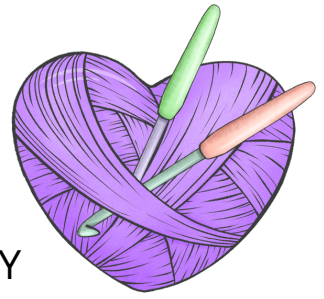
SECOND YEAR

1. LEAF COLLECTION 2ND YEAR

COLLECTION OF 20 LEAVES REPRESENTING 20 FOREST TREES FOUND IN KENTUCKY.



4-H KIDS NEEDLEWORK



1. MEMBER MAY SUBMIT ONE ITEM PER CATEGORY
2. ITEM MUST MEET ALL REQUIREMENTS
3. EACH ENTRY MUST BE THE HANDWORK OF EXHIBITOR

SMALL CROCHET ITEM

EX: SCARF, PURSE, BELT, HAT, PILLOW

LARGE CROCHET ITEM

AFGHAN, SHAWL OR VEST

